

Introduction to Citrix

- [Registering for Citrix Access](#)
 - [Student](#)
 - [Faculty and Staff](#)
- [Accessing Citrix resources](#)
- [Installing Citrix Workspace App](#)
- [Navigating your Citrix Workspace](#)
 - [Home Tab](#)
 - [App Tab](#)
 - [Launching Citrix Virtual Applications](#)
 - [Desktop Tab](#)
 - [Launching Citrix Remote Lab](#)
- [Issues and troubleshooting](#)

Related Articles:

- [Citrix FAQs](#)
- [Citrix Accessing Network Files and Drive Mappings](#)
- [Introduction to Citrix](#)
- [Citrix Software /Application Access](#)
- [Citrix Setup Instructions for Windows](#)
- [Citrix Setup Instructions for Mac](#)
- [Citrix](#)

Citrix allows Selkirk College students, faculty, and staff to access a virtual Windows computer or specialized application on their own personal computers securely from anywhere (on and off-campus) and from any platform (Mac OS, Windows, Chrome OS, Linux, etc.) using the Citrix Receiver and Workspace applications.

Note: Citrix server is based on Windows, meaning that non-Windows users may need to use Windows keyboard shortcuts (e.g., Ctrl+C instead of Cmd+C) while using the applications.

Citrix resources should not be used to circumvent regional restrictions (e.g. accessing content from countries with restricted access to local content. Please contact the content source for exemptions.)

Registering for Citrix Access

Student

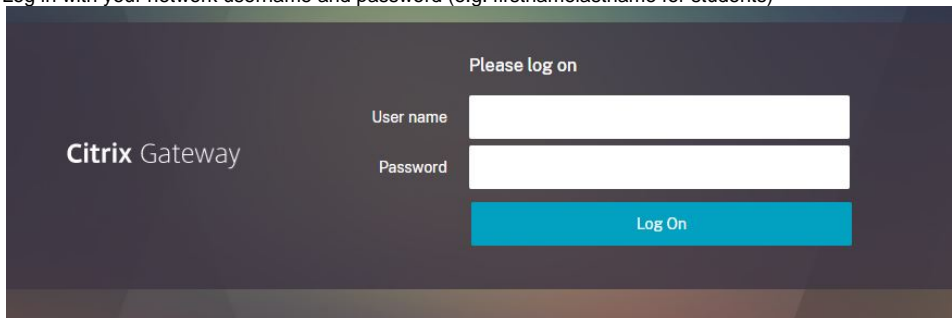
Access to Citrix virtual machines (VMs) is based on your program registration. All registered students will have access to the General Purpose and General Purpose + RRS VMs. Other specialty programs have their own VMs assigned on their program registration. If you do not see any available VM groups, please submit a heldesk request at <https://go.selkirk.ca/>

Faculty and Staff

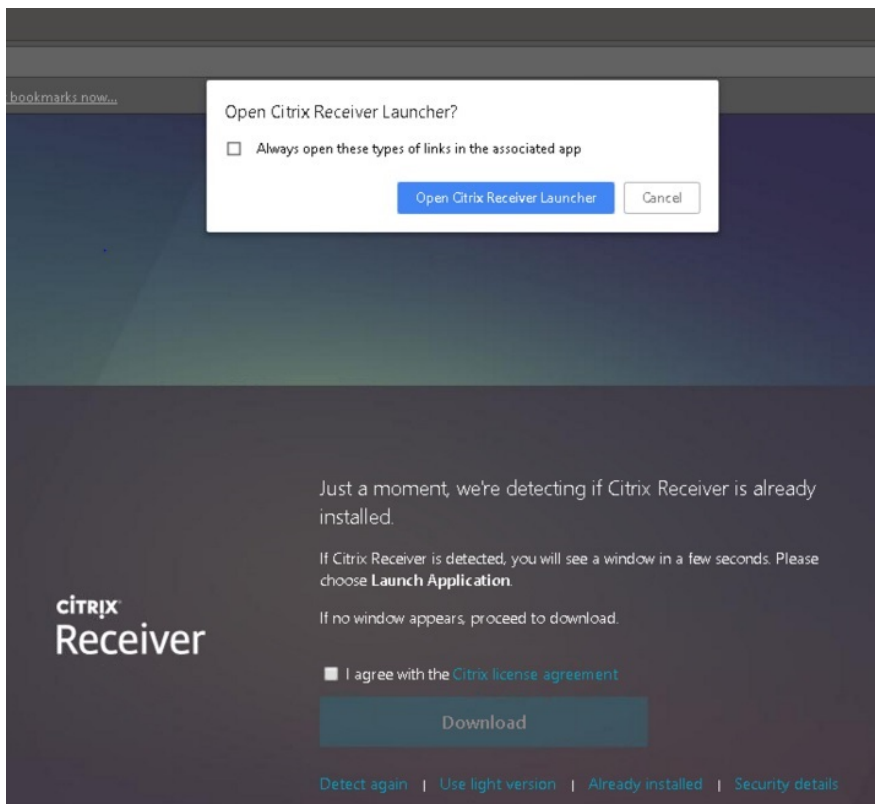
Faculty and Staff have the same access as above.

Accessing Citrix resources

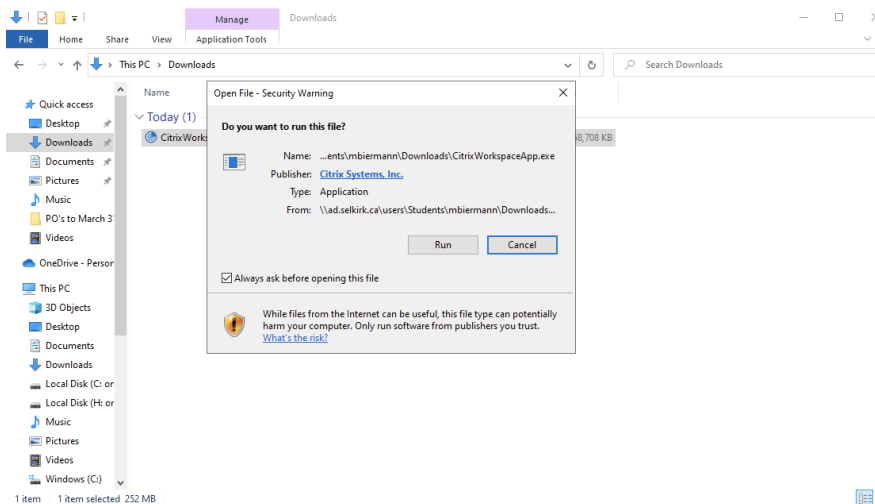
1. Open your preferred web browser (Microsoft Edge recommended)
2. Browse to <https://Citrix.selkirk.ca>
3. Log in with your network username and password (e.g. firstnamelastname for students)



4. Once your login is successful, your Citrix Workspace will launch in your preferred web browser. Select **Open Citrix Receiver Launcher** if prompted.



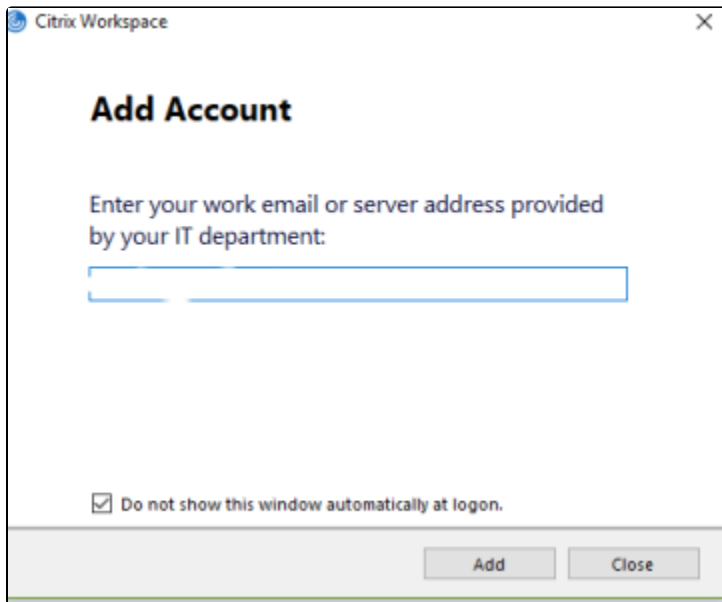
5. If Citrix Workspace application is not installed, you will be prompted to download the Citrix Workspace application. Once downloaded, install the Citrix Workspace application **CitrixWorkspaceApp.exe** and return to **Step 2**.



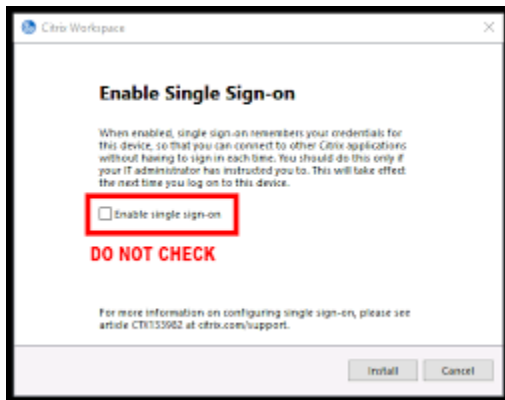
Installing Citrix Workspace App

Citrix Workspace app is the easy-to-install client software that provides seamless, secure access to everything you need to get work done. With the Citrix Workspace app you easily and securely get instant access to all applications, desktops and data from any device, including smartphones, tablets, PCs and Macs.

1. Install the [Citrix Workspace application](#).
 - [Installing Citrix Workspace on Mac](#)
 - [Installing Citrix Workspace on Windows](#)
2. Launch the Citrix Workspace application.
3. If this window appears, **DO NOT ENTER YOUR EMAIL**, just check the box "**Do not show this window automatically at logon**" then click "**Close**".



If the **Enable Single Sign-on** dialog opens, **DO NOT** check the box. Select **Cancel**.

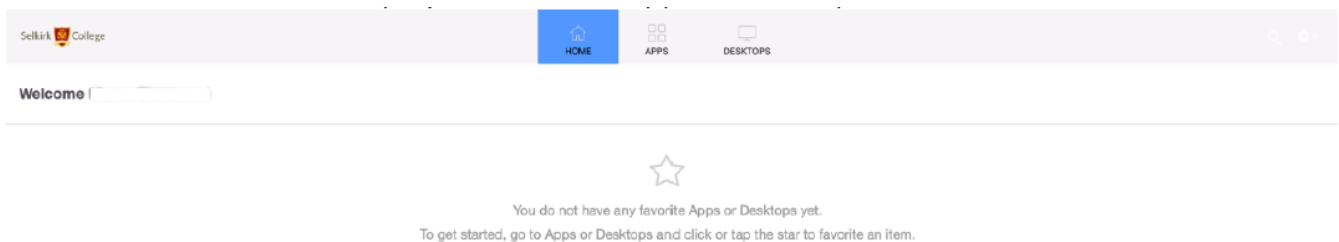


Do not use the Citrix workspace app to connect to the VMs. This only needs to be installed to provide access to Citrix receiver and will automatically run your virtual machine once you click on it in the web browser.

Navigating your Citrix Workspace

Home Tab

The Citrix Home tab will display your favorite Apps or Desktops.

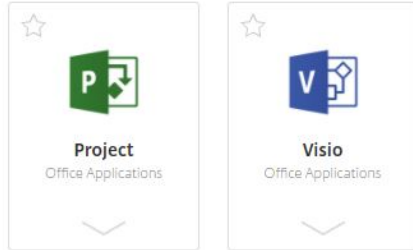


App Tab

The Citrix Apps tab features access to specialized virtual applications without launching a full Windows desktop.

Apps

All (2) Favorites (0) Categories ▾



Launching Citrix Virtual Applications

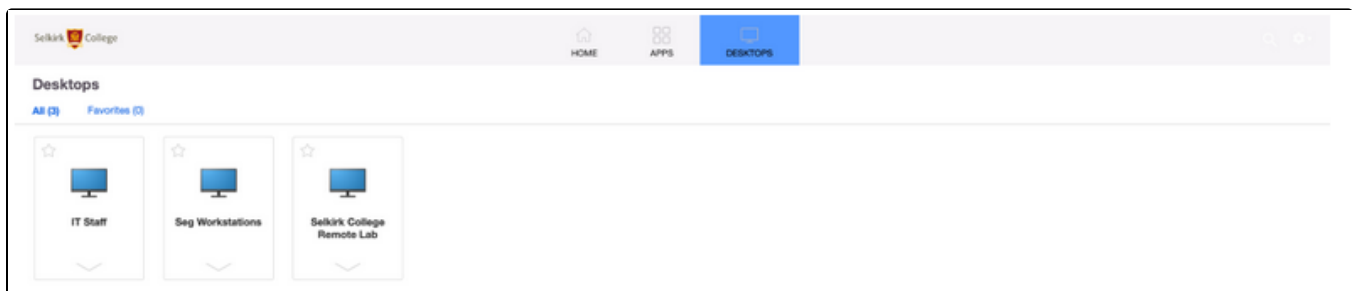
1. Go to <https://Citrix.selkirk.ca> and log in with your network username and password.
2. Navigate to the Apps tab in Citrix Workspace.
3. To open a virtual application, click on the application icon.

Desktop Tab

The Desktop tab features access to specialized applications via a full virtual Windows desktop environment.

Note

You will only see desktops you have access to



Launching Citrix Remote Lab

1. Go to <https://Citrix.selkirk.ca> and log in with your network username and password.
2. Navigate to the Desktops tab in Citrix Workspace.
3. To open a remote lab computer, click on the lab icon.

Issues and troubleshooting

Any issues encountered while accessing or using Citrix resources please consult the [Citrix Frequently Asked Questions](#) first.

If the issue persists please contact our IT service centre [here](#).